



ARQUIBYTE

ON-DEMAND DRAFTING SERVICES

For Homeowners, Builders, and Industry Pros

2024 COMPANY PROFILE

📞 518-531-6815

📞 860-578-4925

www.arquibyte.com

contact@arquibyte.com

ABOUT US

Arquibyte is a remote-work company specializing in providing high-quality design and CAD drafting services to professionals and construction businesses across the United States.

THE BEGINNING

Arquibyte, founded in 2014 by architect Sótico España, started as a design training center in Venezuela, focusing on software training for architects, engineers, and design students. Over time, Arquibyte expanded nationwide, offering architectural design services for residential and commercial projects while supporting local professionals and businesses within the industry.

A STRATEGIC TRANSFORMATION

In response to the global pandemic, Arquibyte transformed into a fully remote service provider operating internationally. This evolution helped build a loyal clientele and a distinguished reputation for high-quality work.

2024 AND BEYOND

Currently, Arquibyte serves a diverse client base across multiple states, including Florida, California, Arizona, and New York. Our strategic focus on remote service expansion aims to establish Arquibyte as the go-to destination for clients seeking expertise and support, regardless of geographical location.

MISSION

To alleviate the CAD drawing workload for construction companies, architects, and professionals by providing reliable, on-demand support from skilled individuals who work with precision, speed, and deliver quality service at affordable prices.

VISION

To be a leading provider of remote architectural design and CAD design services, empowering construction professionals in the United States with innovative solutions that streamline their projects and enhance their capabilities.

WHY CHOOSE ARQUIBYTE?

Whether you need quick turnarounds or specialized assistance, our team is ready to spring into action, providing the support you need, exactly when you need it.

- ✓ **ON-DEMAND EXCELLENCE**
No restrictive long-term contracts. Engage our expertise precisely when you need it, for small adjustments or major design overhauls.
- ✓ **UNMATCHED FLEXIBILITY**
Save on staff management, hardware investments, and software licensing fees. Scale resources up or down according to project demands for optimal efficiency and cost-effectiveness.
- ✓ **COST-EFFECTIVE SOLUTIONS**
Achieve your design vision without breaking the bank. Arquibyte offers affordability without compromising quality or precision.
- ✓ **EXPERT PROFICIENCY**
Our team is proficient in industry-leading software like Revit, AutoCAD, and SketchUp, ensuring superior outcomes for every project.



TESTIMONIALS

Below are some of the people who can vouch for the quality of our services and work.



Alexandra Chambers - Chambers Corp., Sun City, AZ:
"Excellent services! Fast and easy communications and quick turn-around times. Our company will be using their services again in the future."



Bill Radcliffe - Arcadia Group, Pensacola, FL:
"Very fast turnaround and provides an outstanding product. Works with us on last minute changes. This is one of the best teams we worked with."



Michael Barry - Barry Structural Eng., Brooklyn, NY:
"Arquibyte delivers excellent quality drafting in a timely manner and at reasonable prices. They are great to work with!"



Scott Link, Cave Creek, AZ:
"These guys are AMAZING! Great process, simple, convenient, and very fair pricing. I could not recommend this company more highly!! 5-STARS!"



Todd Alford - Arcadia Group, Pensacola, FL:
"One of our best providers, excellent response time. Great attention to details."



Greg Guimond
"I had a very positive experience with Arquibyte. At first, we were a bit hesitant since the project had to be done completely via email, but they were very attentive at the beginning to set a pace and be responsive."

OUR TEAM



Sótico España, CEO and President

A visionary leader and founder of ARQUIBYTE, Sótico brings over 20 years of experience in architecture and project management. Under his leadership, ARQUIBYTE has expanded to serve international clients while focusing on innovation and quality.



Ángel España, CTO

With a solid background in technology, computer systems and programming, Ángel supervises all technological aspects of ARQUIBYTE, ensuring the efficiency of the company's clockwork and systems.



Alex Villabona, CFO

Alex manages the finances of ARQUIBYTE with a sharp focus on resource optimization and financial strategy. His leadership ensures the economic sustainability and growth of the company, enabling continuous expansion and service improvement.

HOW WE WORK



SERVICES

We offer a wide range of services, including collaboration in architectural design, engineering, and structural projects. Additionally, we specialize in creating detailed floor plans, converting your sketches into AutoCAD drawings, and developing 3D models for a variety of uses.

CODES

Our team is well-versed in the International Building Code (IBC) and the International Residential Code (IRC), with extensive experience in residential projects, particularly in wood framing.

In the following pages, you'll find a comprehensive list of services organized alphabetically for your convenience and aims to cover the majority of our services. Throughout the following pages, the most common services will be highlighted in bold, and you'll also find images of completed projects. While it may not include every specific task, please do not hesitate to contact us with your unique requirements. We are happy to review your needs and provide a tailored solution.

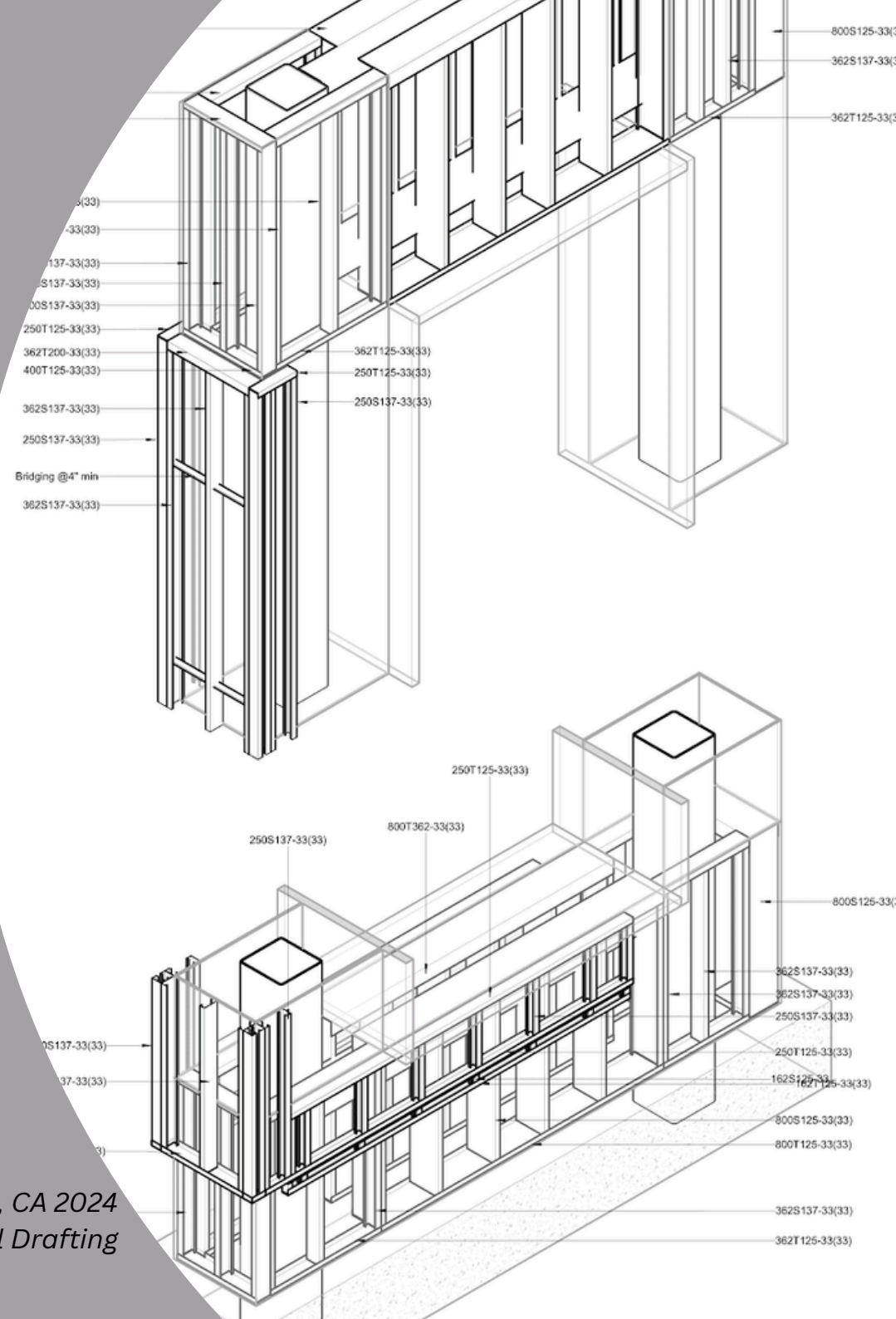


*Sag Harbor, NY 2023
Drafting, Collaboration*



SERVICES - A

- **2D Plan Development** - Creation of flat architectural plans that provide a detailed layout of each floor of the building, showing all features in scale.
- **Accessibility Design and Planning** - Drafting designs that ensure buildings and environments are accessible to people with disabilities, adhering to legal and practical standards.
- **Accessibility Retrofits** - Adapting existing structures to meet accessibility standards, ensuring that spaces are usable for individuals with disabilities.
- **Animations and Virtual Tours** - Creating animated walkthroughs of architectural designs, allowing clients and stakeholders to visualize a project in a dynamic way.
- **Architectural 3D Modeling** - Building complex digital models of architectural designs to visualize structures before they are built.
- **As-Built Drawings** - Detailed drawings created after a construction project is completed, reflecting all changes made during the building process versus the original plan.
- **BIM Creation** - Generating a digital representation of physical and functional characteristics of buildings through Building Information Modeling technology.



*Pylon Sign, CA 2024
Structural Drafting*

SERVICES - B

- **Building Renovation Plans** - Drafting designs and plans specifically for the renovation or restoration of existing buildings.
- **Civil Infrastructure Drafting** - Creating detailed designs and drawings for public infrastructure projects such as roads, bridges, and water systems.
- **Conceptual Design** - The initial phase of design, where drafts are created to explore ideas and conceptualize the overall look and feel of a building.
- **Construction Documentation** - Comprehensive documents that outline all the specifications and instructions necessary for construction.
- **Demolition Plans** - Plans specifically prepared for the safe and efficient demolition of existing structures.
- **Detailed Section Drawings** - Drawings that show a vertical "cut" through a structure, used to describe relationships between different levels of a building.
- **Digital Twin Creation** - Developing a virtual representation of a physical asset to simulate, predict, and optimize the asset using real-time data.
- **Electrical Plans** - Drafts detailing the layout of all electrical outlets, fixtures, and wiring in a building.
- **Elevations** - Drawings that show the exterior views of each side of a building, detailing vertical dimensions and exterior finishes.

*FM Custom Houses, MI 2024
Drafting, Renderings*

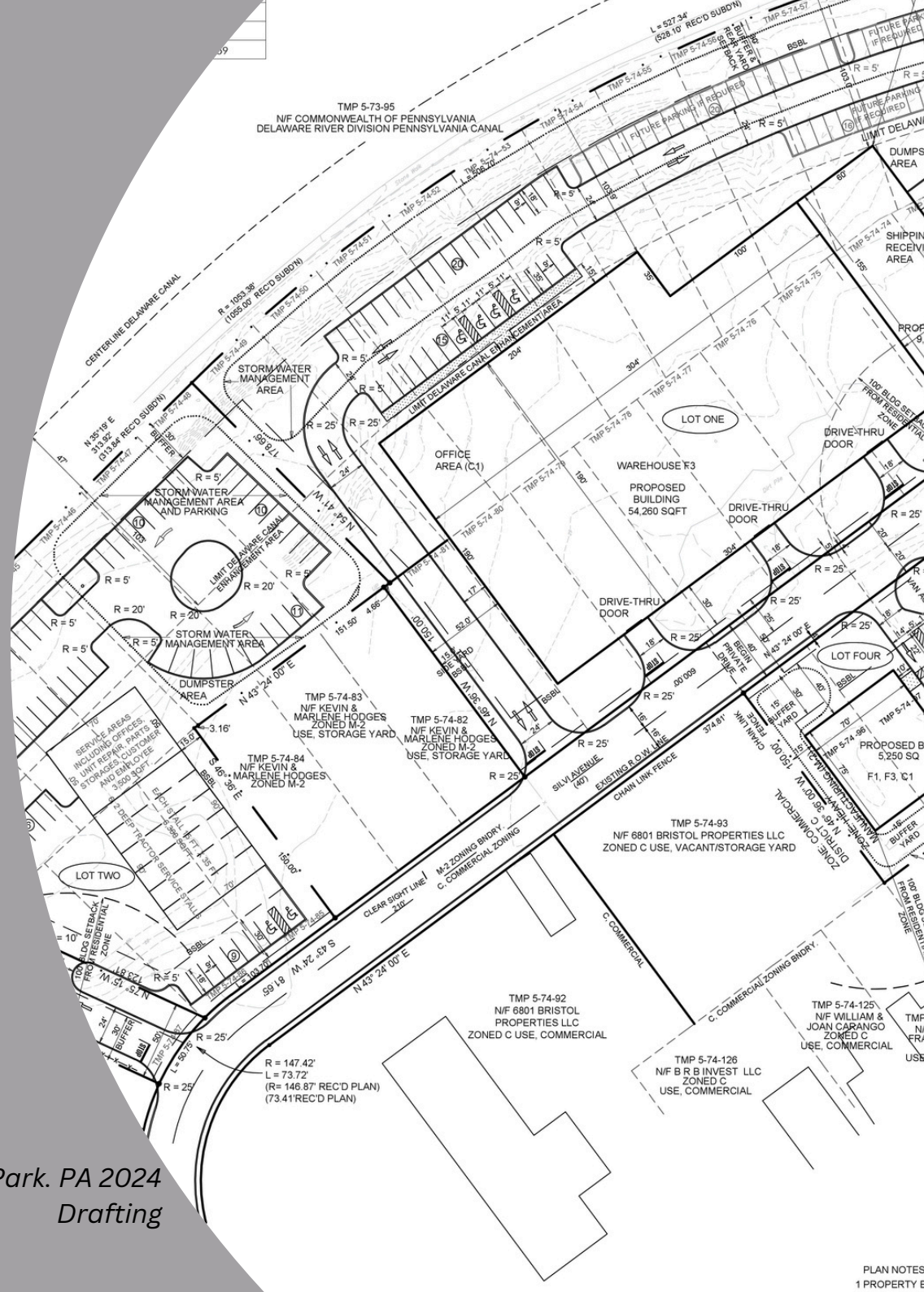


SERVICES - D

- **Parking Layout Design** - Planning the layout of parking areas to maximize space efficiency and traffic flow.
- **Permit Drawings** - Drawings created specifically to meet the requirements of local authorities to obtain building permits. (*)
- **Plumbing Plans** - Detailed representation of the plumbing system within a building, including pipe routes, fixture locations, and types.
- **Rebar Detailing and Scheduling** - Creating detailed plans for the placement, type, and size of reinforcing steel in concrete structures.
- **Reflected Ceiling Plans** - Ceiling designs reflected in a mirror image on the floor plan, showing ceiling features relative to the layout below.
- **Roof Plans** - Plans that outline the design and structure of a roof, including materials, shapes, and supports.
- **Sections** - Vertical or horizontal cuts through a structure to show internal structures not visible from the exterior.
- **Space Planning** - Organizing physical space in buildings to optimize its use and functionality according to the client's requirements.
- **Structural Details** - Detailed drawings of specific, critical points in a structure, showing how building components connect.

(*)Exceptions apply, please read our T.O.S.

*Edgely Manor Industrial Park. PA 2024
Drafting*



SERVICES - E

- **Structural Plans** - Plans that show the structural elements of a building, specifying the design and materials of structural components.
- **Subdivision Planning** - Planning and designing the division of a larger tract of land into smaller plots.
- **Technical Drawing and Construction Details** - Detailed technical drawings that provide comprehensive information about construction methods and materials.
- **Urban Design** - The broad planning of entire districts or urban areas, focusing on the arrangement, appearance, and functionality of urban spaces.
- **Water and Sewage System Design** - Planning the systems that manage fresh water delivery and waste water removal in buildings or developments.



*Obrien Residence, CO 2024
Drafting, Rendering*



CONTACT

Get in touch today, and we'll take care of your plans!

☎ 518-531-6815

☎ 860-578-4925

www.arquibyte.com

contact@arquibyte.com

